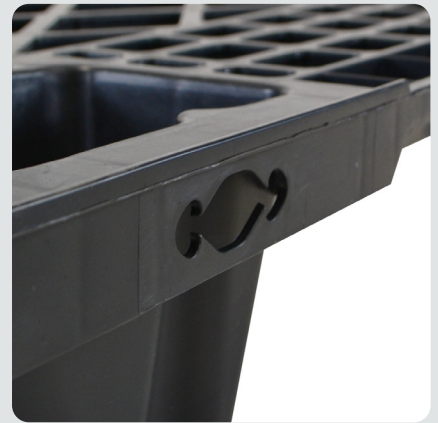


Nestable Plastic Pallet

Product Specification



Key Features

- Lightweight but with excellent strength.
- Great space saving ration with nesting capability.
- Save £££'s in return journey air carriage.
- Convenient stretch wrapping anchor feature.
- Angled feet make handling easy.

Specification

Size: 1200 x 800mm
Height: 130mm
Weight: 4.5kg
Deck Type: Open
Base Type: 9 Nesting Feet
Material: Recycled Polypropylene
Static Load: 1800kg
Dynamic Load: 900kg